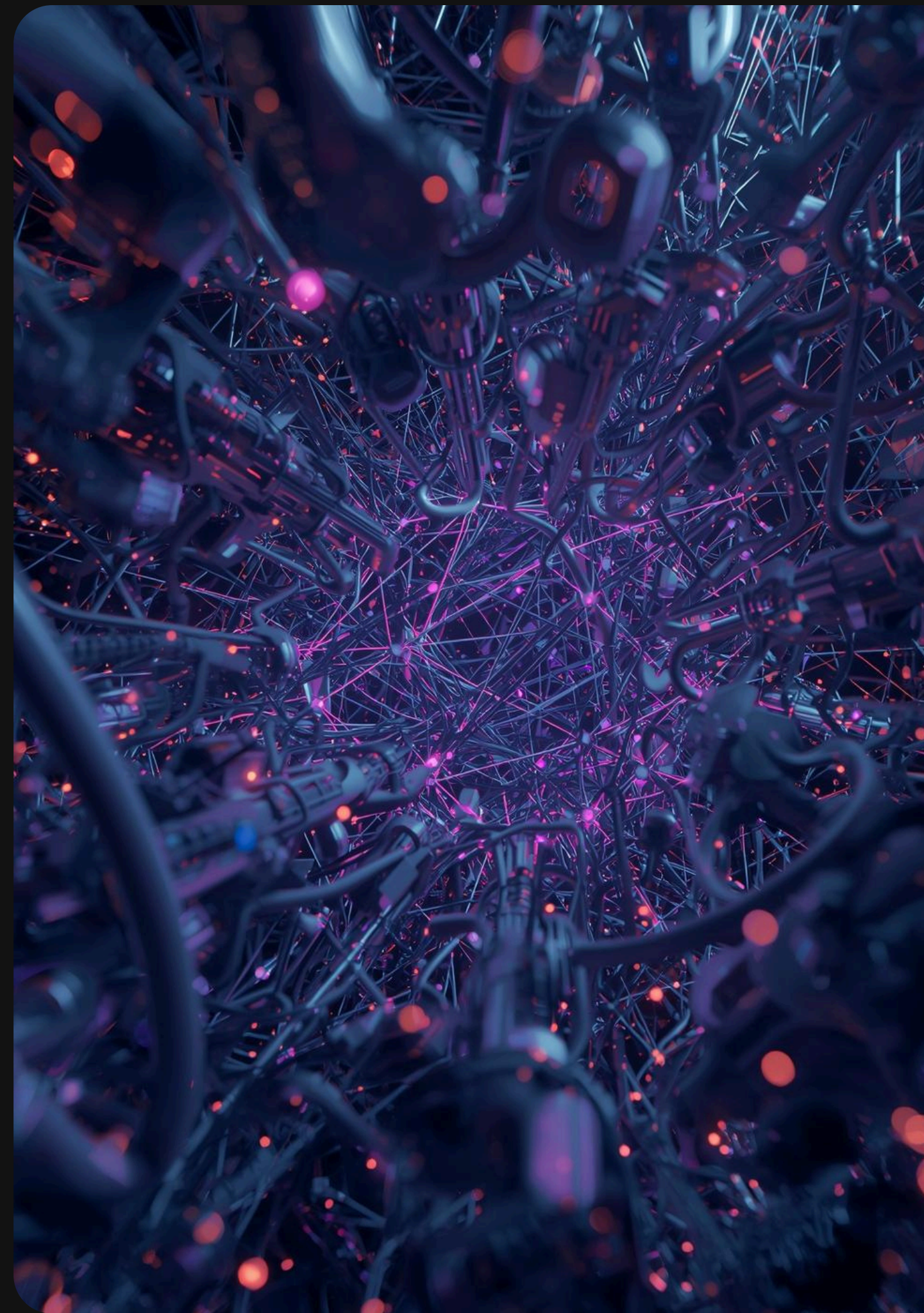




Digital Innovation

Leadership Defined

January 25, 2026





The Reality of AI

Many companies use AI, but they
do not implement it properly

**A lack of technological integration
negatively impacts efficiency and
competitiveness**





The future is not about using AI

IT IS LEADING WITH AI





DRAG Framework Overview



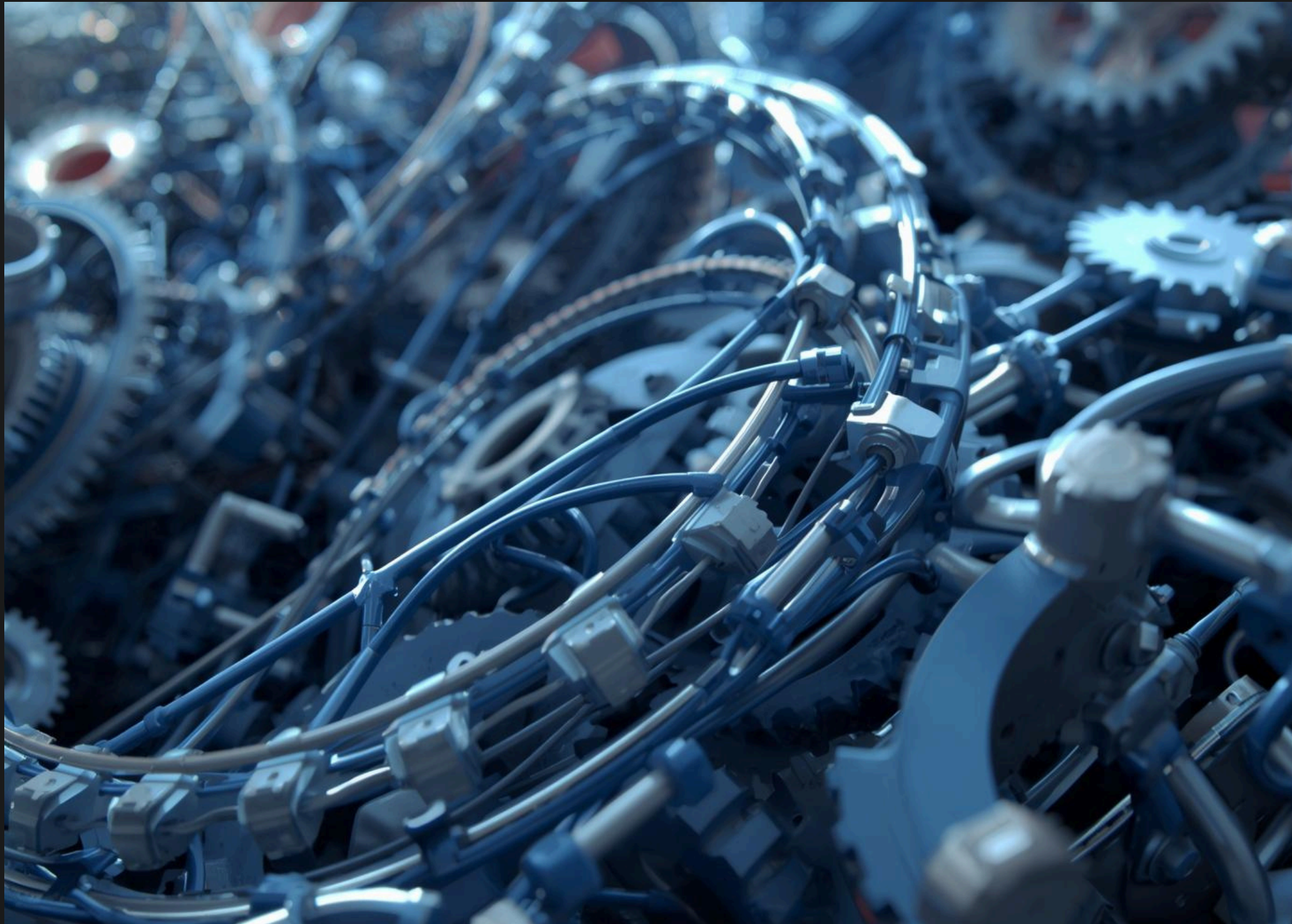


Operating vs Designing

AI absorbs friction; Leadership creates the future.

This visual design contrasts the dual dynamics between technology and leadership, showing how artificial intelligence can optimize operations and how visionary leadership shapes our future.





AUTOMATION

Without
automation, this
does not scale

Manual processes do not **survive**



The Smart Gym

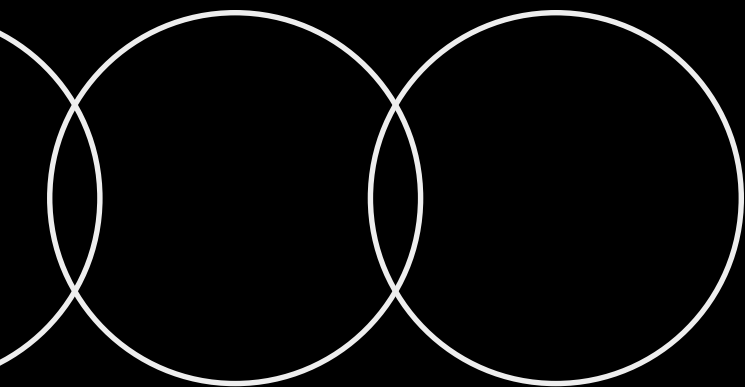
Training technical leaders with artificial intelligence

Crisis Simulation

AI can simulate crisis situations, allowing leaders to practice effective and rapid responses in controlled environments, improving their ability to handle pressure and make decisions.

Failure Simulation

By simulating technical failures in a safe environment, leaders can learn to identify problems quickly and implement solutions, which strengthens their ability to manage adverse situations.





Learn-It-All Culture & Effective Connections

BREAKING SILOS IS VITAL FOR SUCCESS

Integrating different areas fosters accelerated learning, allowing organizations to adapt quickly to a changing environment and seize emerging opportunities in a constantly evolving world



Netsocs Vision

Autonomous Systems

Software-defined leadership drives continuous automation within the realm of autonomous systems. This transformation enables greater efficiency and adaptability, creating a future where technology and artificial intelligence orchestrate interconnected systems, maximizing the potential of each.



Netsocs



The future

